

Azalea

HEIGHTS



GENERAL MATHENGE DRIVE



LUXURIOUS

3 BEDROOM APARTMENTS

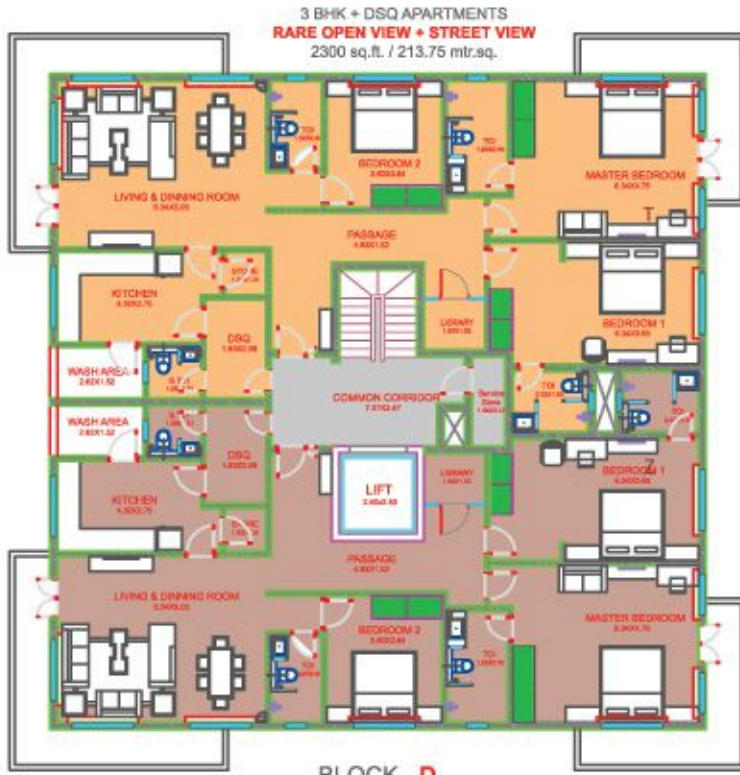


FLOOR PLANS

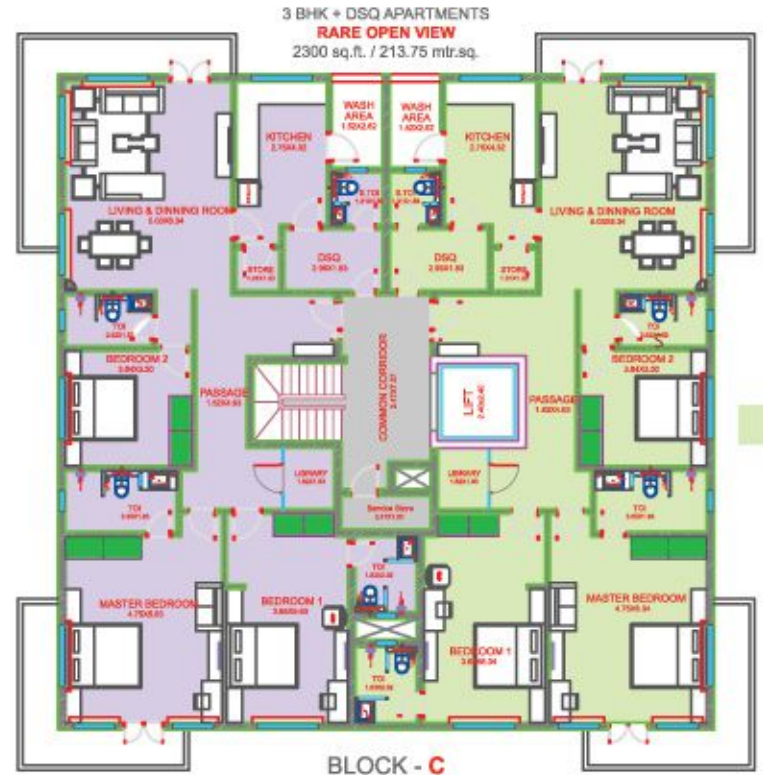


Proud Winners at the 2nd Real Estate Excellence Awards for the segment of-Best Highend Highrise Residential Developer

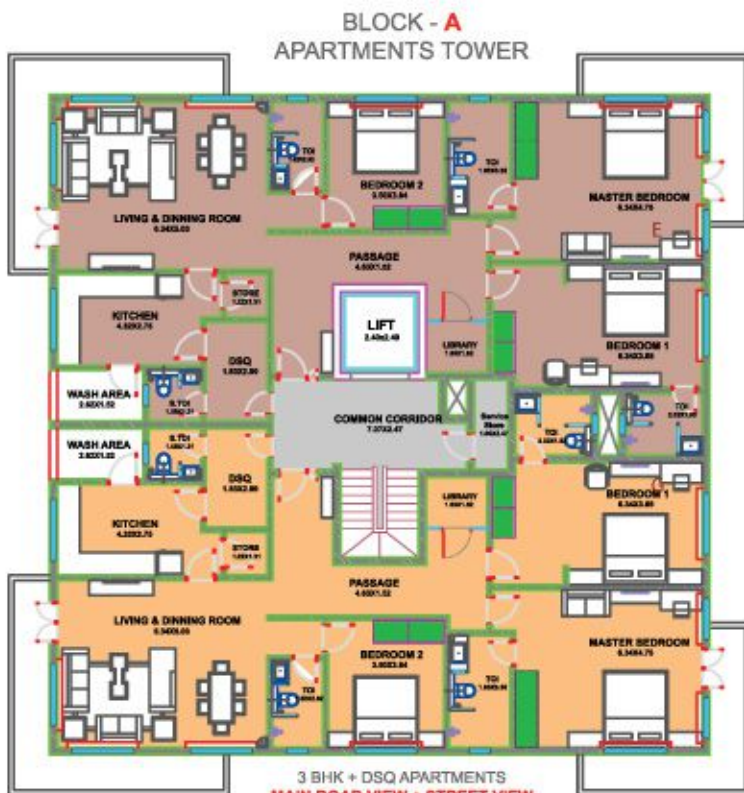
GENERAL MATHENGE CLOSE



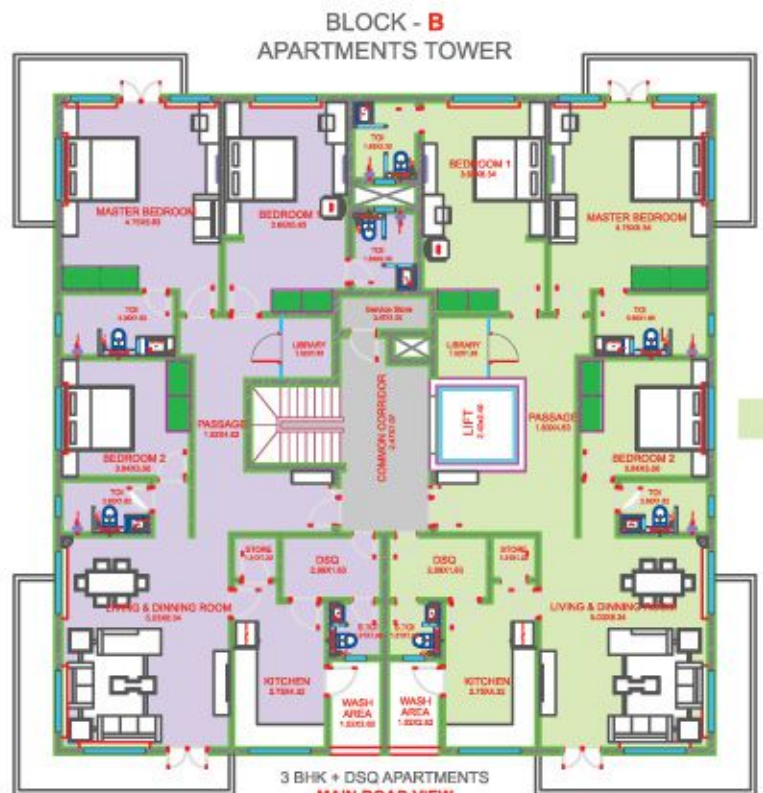
BLOCK - D
APARTMENTS TOWER



BLOCK - C
APARTMENTS TOWER



BLOCK - A
APARTMENTS TOWER



BLOCK - B
APARTMENTS TOWER

GENERAL MATHENGE DRIVE



ABOUT AZALEA HEIGHTS

Azalea Heights is an award winning mixed development project located on General Mathenge Drive, Westlands. Having won the Best Highend Highrise Real Estate Excellence Award, Azalea Heights has cemented its spot as the most innovative and iconic residential development in Westlands.

Developed on a 1-acre plot, the apartments have been aesthetically designed to enjoy large living spaces in luxury and style. The apartments are 3BR + DSQ of 2300 built-up sqft.

Azalea Heights is an unbeatable combination of luxury and convenience making this property the most desirable home in Nairobi.



PROJECT AMENITIES

RECREATIONAL AMENITIES:

- Heated Swimming Pool
- Steam & Sauna
- Fully Equipped Gym
- Children's Play Area
- Multipurpose Hall
- Indoor Entertainment Zone
- Residents' BBQ and Terrace Area

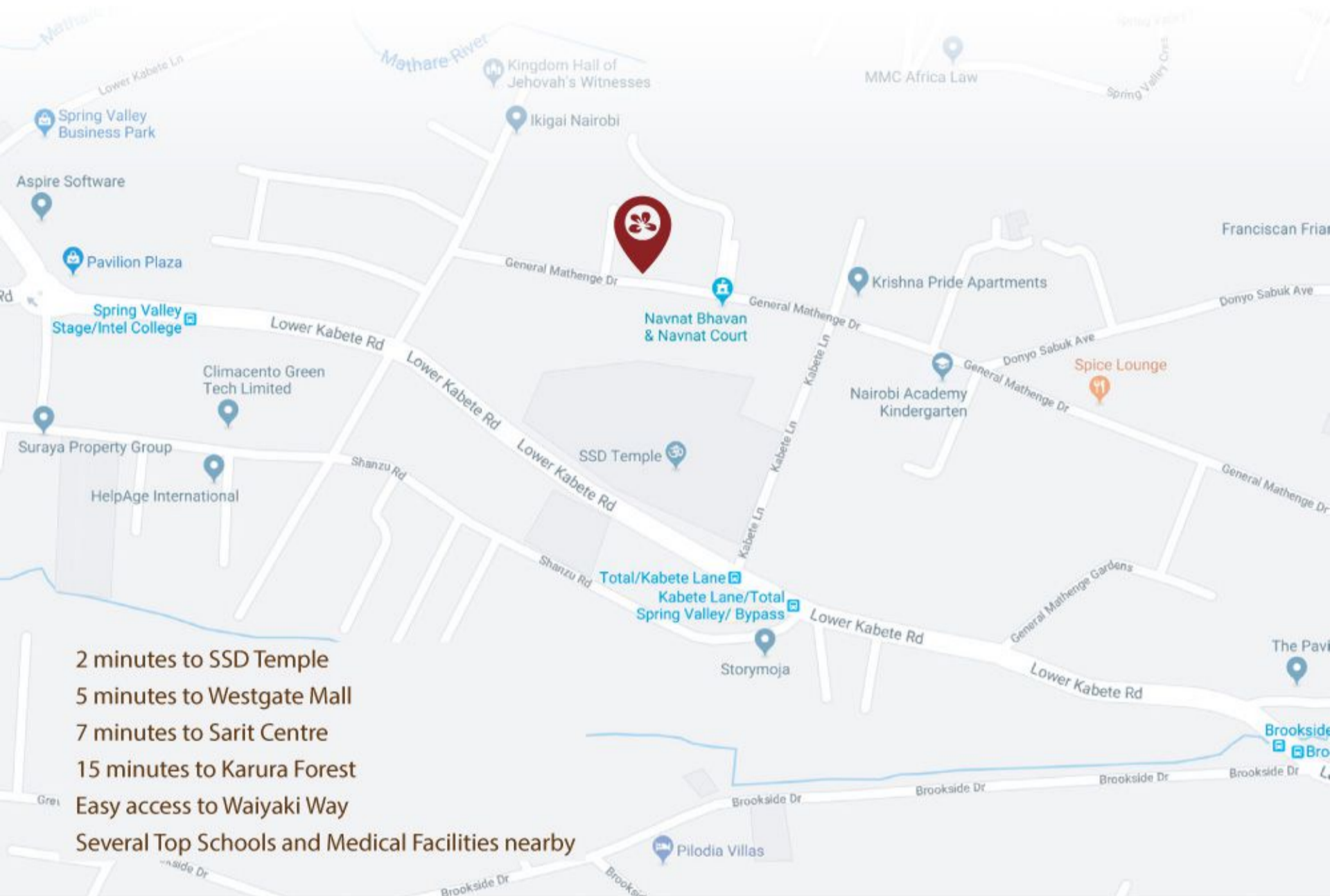
SERVICES:

- Video Access Control
- Borehole Water Supply
- Power backup for common areas
- CCTV and Electric Fence
- Satellite TV and Fiber Optic Infrastructure
- Manned Security Access
- 2 Parkings per apartment





SITE LOCATION



2 minutes to SSD Temple
 5 minutes to Westgate Mall
 7 minutes to Sarit Centre
 15 minutes to Karura Forest
 Easy access to Waiyaki Way
 Several Top Schools and Medical Facilities nearby

Other projects by Fairdeal Development and Infrastructure Ltd.



Developed & Marketed by



CONTACT

2nd Floor, Kellico Complex,
 Mombasa Road, Nairobi
 Tel: +254 705 791 702
 Tel: +254 739 393 546



@fairdealpropertieske



@FDILproperties



@fairdeal.properties.kenya



sales@fairdealproperties.biz



www.properties.fairdeal.co.ke